



news release

**FOR IMMEDIATE RELEASE**

**contact:** Shelly Megaw, 507.381.0404  
smegaw@greatermankato.com

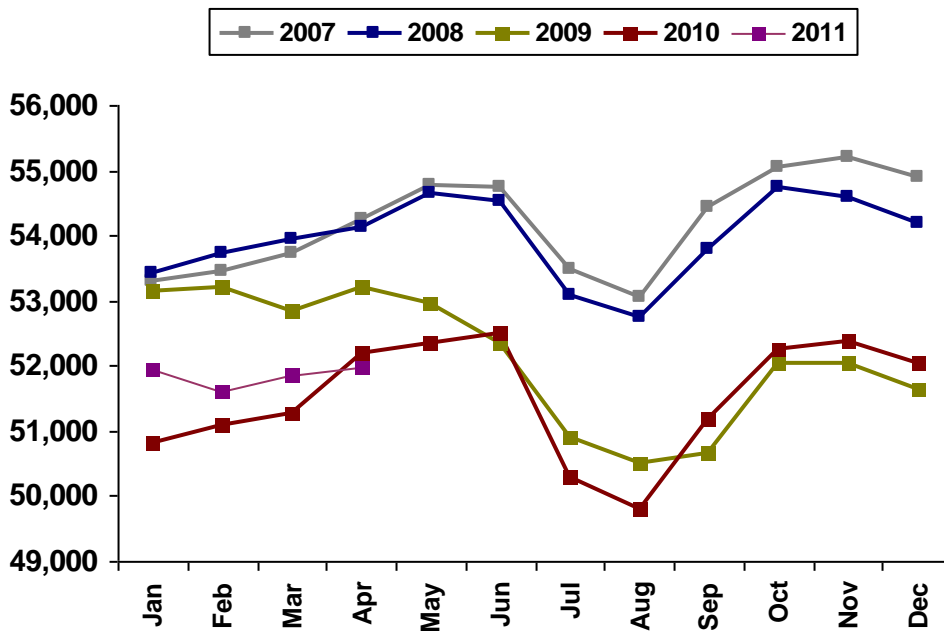
**April Jobs in Greater Mankato Up Slightly from March**

Mankato, MINN (May 19, 2011) – The Minnesota Department of Employment and Economic Development (DEED) today released job figures for our regional Metropolitan Statistical Area (MSA) that includes Blue Earth and Nicollet counties. These numbers indicate that job numbers for Greater Mankato are continuing to mirror pre-recession trends.

When it comes to judging the economic strength of a region relative to jobs, one of the best sources is **Current Employment Statistics (CES)** data, which measures the number of paid employees in a particular region, excluding self-employment and farm jobs. Although the CES report shows jobs in Greater Mankato decreased slightly (.2%) between April 2010 and April 2011, job numbers between March 2011 and April 2011 increased by .4%. “This trend is very similar to the pre-recession years of 2007 and 2008, when job numbers between March and April increased by 1% and .3% respectively,” said Jonathan Zierdt, Greater Mankato Growth President & CEO.

**Greater Mankato Jobs Four Year History**

(Mankato-North Mankato MSA, which includes all of Blue Earth and Nicollet Counties)



Source: CES, Minnesota Department of Employment & Economic Development (DEED)  
Compiled by: Greater Mankato Growth, Inc. | greatermankato.com | 507.385.6640 | info@greatermankato.com

Another measure of area employment is the **Local Area Unemployment Statistics (LAUS)**. LAUS is not as much an indicator of the strength of the business climate, because it measures the total number of people who live in a particular region who are employed, rather than the businesses in the region employing them. Still, LAUS employment numbers continue to look good, with the March 2011 unemployed rate in the region remaining steady at 5.7%. Also, when compared to other areas of the state and country, Greater Mankato fares well in terms of unemployment (<http://www.positivelyminnesota.com/apps/lmi/laus/Graph.aspx?geog=2721031860&adjust=0>).

### **About Greater Mankato Growth**

Greater Mankato Growth (GMG) is committed to advancing business for a stronger community. As the Chamber of Commerce and Economic Development organization serving the regional marketplace, GMG advances business through: existing business support, new business growth, business promotion, talent development, public affairs, community marketing, visitor attraction and servicing and civic engagement.

###