



news release

FOR IMMEDIATE RELEASE

contact: Shelly Megaw, 507.381.0404
smegaw@greatermankato.com

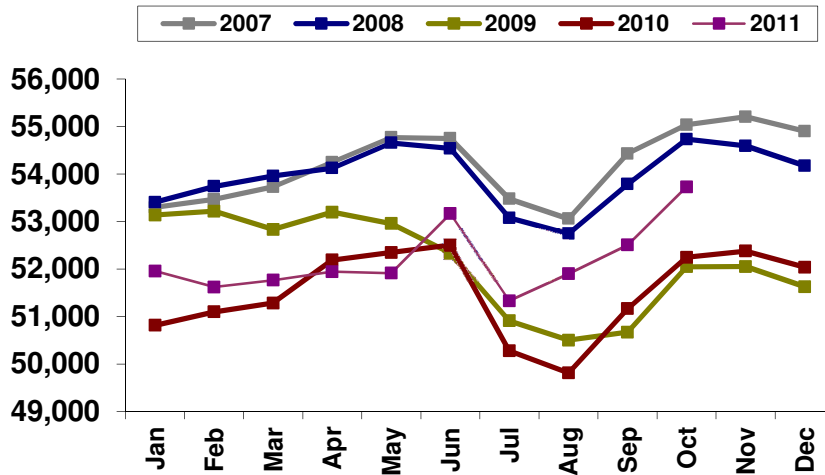
1,500 more jobs in Greater Mankato in October this year than last year

Mankato, MINN (November 17, 2011) – The Minnesota Department of Employment and Economic Development (DEED) today released job figures for our regional Metropolitan Statistical Area (MSA) that includes Blue Earth and Nicollet counties.

When it comes to judging the economic strength of a region relative to jobs, one of the best sources is **Current Employment Statistics (CES)** data, which measures the number of paid employees in a particular region, excluding self-employment and farm jobs. Today’s CES report indicates the MSA had a **year over year gain of 1,482 jobs or 2.8%**. The **government** sector, which accounts for 17% of all jobs in the MSA, added 73 jobs, for an increase of .8%. The **private** sector, which accounts for 83% of jobs in the MSA, added 1,409 jobs, for an increase of 3.3%. Currently, businesses in the private sector are 79% service providing and 21% goods producing.

Greater Mankato Jobs History

(Mankato-North Mankato MSA, which includes all of Blue Earth and Nicollet Counties)



Source: CES, Minnesota Department of Employment & Economic Development (DEED)
Compiled by: Greater Mankato Growth, Inc. | greatermankato.com | 507.385.6640 | info@greatermankato.com

In addition to the 2.8% year over year increase in October, the region’s **CES job numbers for September and August were revised**, indicating even higher increases than earlier reported. September’s year over increase, which was originally reported at 2.5%, was revised to 2.6%, while August’s increase, originally reported at 3.7%, was revised to 4.2%. “These three exceptionally strong months of year over year job growth are reason for continued optimism,” said Greater Mankato Growth President & CEO Jonathan Zierdt.

Another measure of area employment is the **Local Area Unemployment Statistics (LAUS)**. LAUS is not as much an indicator of the strength of the business climate, because it measures the total number of people who live in a particular region who are employed, rather than the businesses in the region employing them. Still, LAUS employment numbers continue to look good, with a September regional unemployment rate of 4.9%, compared to 5.9% for the same period last year. Also, when compared to other areas of the state and country, Greater Mankato fares well in terms of unemployment (<http://www.positivelyminnesota.com/apps/lmi/laus/Graph.aspx?geog=2721031860&adjust=0>).

“In looking at the past several years, one particularly exciting observation is that today’s reports reveal the highest CES job number in 34 months and the lowest LAUS unemployment number in 33 months for Greater Mankato,” said Zierdt.

About Greater Mankato Growth

Greater Mankato Growth (GMG) is committed to advancing business for a stronger community. As the Chamber of Commerce and Economic Development organization serving the regional marketplace, GMG advances business through: existing business support, new business growth, business promotion, talent development, public affairs, community marketing, visitor attraction and servicing and civic engagement.

###