



news release

FOR IMMEDIATE RELEASE

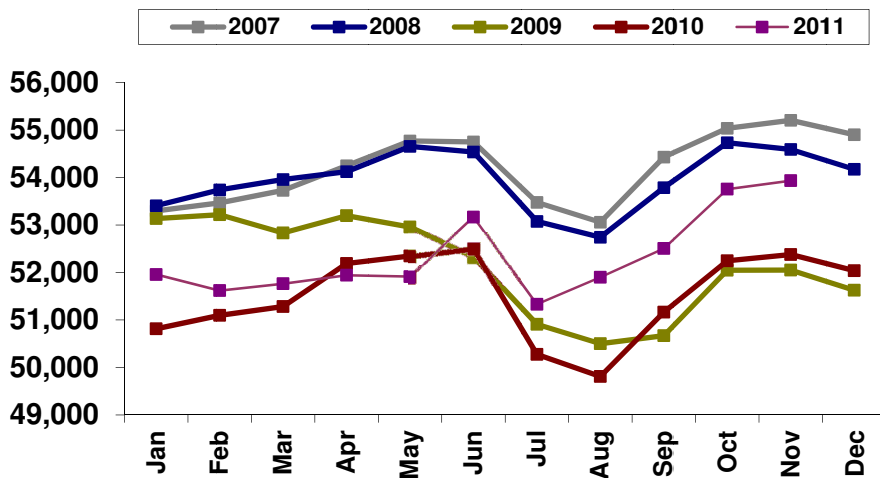
contact: Shelly Megaw, 507.381.0404
smegaw@greatermankato.com

1,555 more jobs in Greater Mankato in November this year than last year

Highest job number for region since March 2008

Mankato, MINN (December 15, 2011) – The Minnesota Department of Employment and Economic Development (DEED) today released job figures for our regional Metropolitan Statistical Area (MSA) that includes Blue Earth and Nicollet counties.

When it comes to judging the economic strength of a region relative to jobs, one of the best sources is Current Employment Statistics (CES) data, which measures the number of paid employees in a particular region, excluding self-employment and farm jobs. Today’s CES report indicates that in November 2011 the MSA had a year over year gain of 1,555 jobs or 3.0%, growing from 52,379 jobs in 2010 to 53,934 in 2011. This represents the sixth straight month of year over year job increases and the highest job number since March 2008.



Source: CES, Minnesota Department of Employment & Economic Development (DEED)
Compiled by: Greater Mankato Growth, Inc. | greatermankato.com | 507.385.6640 | info@greatermankato.com

“The Greater Mankato region’s job numbers have been strong throughout 2011. The average monthly job gain for Greater Mankato between January and November, 2011 was 880 jobs or 1.7 percent,” said Greater Mankato Growth President & CEO Jonathan Zierdt. “While the state of Minnesota also appears to be on the upswing, with an average monthly job gain of .8%, Greater Mankato’s numbers are even more impressive.”

Area	Year to Date Average (January – November) Year Over Year Increase	Year over Year Increase %
Mankato-North Mankato MSA	881	1.7%
Rochester MSA	1,741	1.7%
Minneapolis-St. Paul-Bloomington MSA	13,095	0.8%
Duluth MSA	687	0.5%
St. Cloud MSA	-603	- 0.6%
Minnesota (entire state)	22,079	0.8%

Another measure of area employment is the **Local Area Unemployment Statistics (LAUS)**. LAUS is not as much an indicator of the strength of the business climate, because it measures the total number of people who live in a particular region who are employed, rather than the businesses in the region employing them. Still, LAUS employment numbers continue to look good, with an October regional unemployment rate of 4.3%, a drop from 5.3% last October and the lowest unemployment number since November, 2008. Also, when compared to other areas of the state and country, Greater Mankato fares well in terms of unemployment.

(<http://www.positivelyminnesota.com/apps/lmi/laus/Graph.aspx?geog=2721031860&adjust=0>).

About Greater Mankato Growth

Greater Mankato Growth (GMG) is committed to advancing business for a stronger community. As the Chamber of Commerce and Economic Development organization serving the regional marketplace, GMG advances business through: existing business support, new business growth, business promotion, talent development, public affairs, community marketing, visitor attraction and servicing and civic engagement.

###