



news release

FOR IMMEDIATE RELEASE

contact: Shelly Megaw, 507.381.0404
smegaw@greatermankato.com

12th Straight Month of Year over Year Job Gains

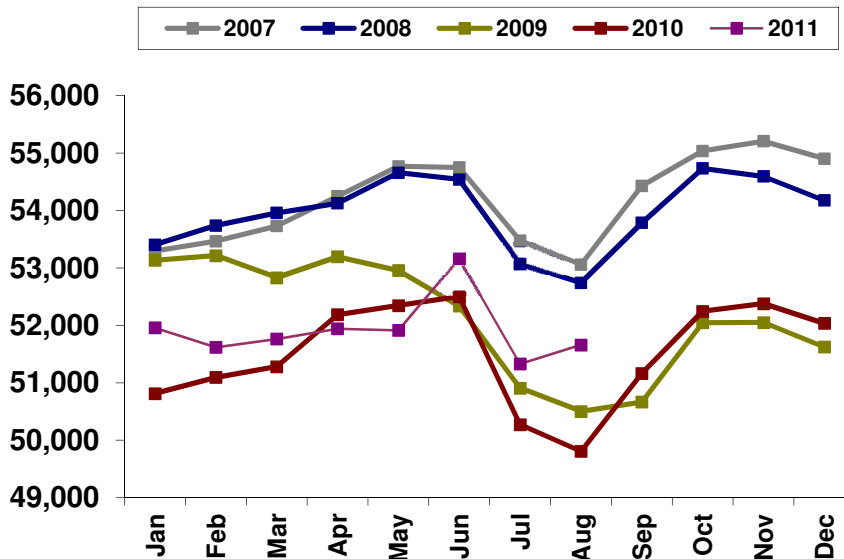
Mankato, MINN (September 15, 2011) – The Minnesota Department of Employment and Economic Development (DEED) today released job figures for our regional Metropolitan Statistical Area (MSA) that includes Blue Earth and Nicollet counties.

When it comes to judging the economic strength of a region relative to jobs, one of the best sources is **Current Employment Statistics (CES)** data, which measures the number of paid employees in a particular region, excluding self-employment and farm jobs. Today’s CES report indicates the MSA had a year over year job increase of **1,853 jobs or 3.7%**. “This is the 12th straight month of year of year job gain for our area, which is extremely positive,” said Greater Mankato Growth President & CEO Jonathan Zierdt. The private sector produced 86% of the year over year job gains, with the public sector accounting for 14%.

Month over month job numbers also increased, with **331 more jobs in August than July**. Of the 331 additional jobs, 164 came from the private sector, while 167 came from the public sector.

Greater Mankato Jobs History

(Mankato-North Mankato MSA, which includes all of Blue Earth and Nicollet Counties)



Source: CES, Minnesota Department of Employment & Economic Development (DEED)
Compiled by: Greater Mankato Growth, Inc. | greatermankato.com | 507.385.6640 | info@greatermankato.com

Another measure of area employment is the **Local Area Unemployment Statistics (LAUS)**. LAUS is not as much an indicator of the strength of the business climate, because it measures the total number of people who live in a particular region who are employed, rather than the businesses in the region employing them. Still, LAUS employment numbers continue to look good, with a July unemployment rate of 6.4% for the region. Also, when compared to other areas of the state and country, Greater Mankato fares well in terms of unemployment (<http://www.positivelyminnesota.com/apps/lmi/laus/Graph.aspx?geog=2721031860&adjust=0>).

About Greater Mankato Growth

Greater Mankato Growth (GMG) is committed to advancing business for a stronger community. As the Chamber of Commerce and Economic Development organization serving the regional marketplace, GMG advances business through: existing business support, new business growth, business promotion, talent development, public affairs, community marketing, visitor attraction and servicing and civic engagement.

###