



news release

FOR IMMEDIATE RELEASE

contact: Shelly Megaw, 507.381.0404
smegaw@greatermankato.com

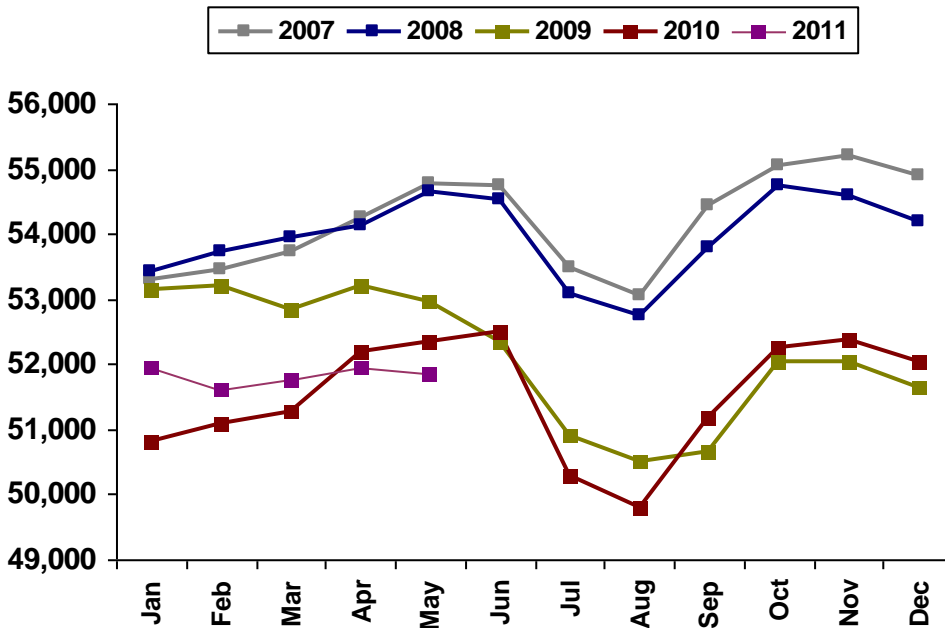
May Jobs in Greater Mankato Down Slightly from April

Mankato, MINN (June 16, 2011) – The Minnesota Department of Employment and Economic Development (DEED) today released job figures for our regional Metropolitan Statistical Area (MSA) that includes Blue Earth and Nicollet counties.

When it comes to judging the economic strength of a region relative to jobs, one of the best sources is **Current Employment Statistics (CES)** data, which measures the number of paid employees in a particular region, excluding self-employment and farm jobs. Today’s CES report indicates that the number of jobs in the MSA dropped slightly over the past reported month, with 91 fewer jobs in May than April. However, Greater Mankato President & CEO Jonathan Zierdt says this is not necessarily reason for alarm. “The decrease between April and May is nominal at .2%, and while year-over job numbers from May 2010 to May 2011 do indicate a decrease of .9%, one month’s marginal performance does not provide reason for undue concern,” said Zierdt. “Even more important, when we look behind the numbers, we find that year-over-year job numbers in goods producing businesses went up by 1.4%, and conversely jobs in service-providing organizations went down 1.4%, the bulk of those in government, with a year-over-year drop of 3.6%.”

Greater Mankato Jobs History

(Mankato-North Mankato MSA, which includes all of Blue Earth and Nicollet Counties)



Source: CES, Minnesota Department of Employment & Economic Development (DEED)
Compiled by: Greater Mankato Growth, Inc. | greatermankato.com | 507.385.6640 | info@greatermankato.com

Another measure of area employment is the **Local Area Unemployment Statistics (LAUS)**. LAUS is not as much an indicator of the strength of the business climate, because it measures the total number of people who live in a particular region who are employed, rather than the businesses in the region employing them. Still, LAUS employment numbers continue to look good, with the April 2011 unemployed rate in the region dropping from 5.7% in February and March to 5.1% in April. Also, when compared to other areas of the state and country, Greater Mankato fares well in terms of unemployment (<http://www.positivelyminnesota.com/apps/lmi/laus/Graph.aspx?geog=2721031860&adjust=0>).

About Greater Mankato Growth

Greater Mankato Growth (GMG) is committed to advancing business for a stronger community. As the Chamber of Commerce and Economic Development organization serving the regional marketplace, GMG advances business through: existing business support, new business growth, business promotion, talent development, public affairs, community marketing, visitor attraction and servicing and civic engagement.

###